

Moonshine

• A Free Project Sheet •
• NOT FOR RESALE •

By Jan Mott



Pillow #1



Pillow #2

Designs by Heidi Pridemore



Pillow #3

Pillows

Skill Level: Intermediate



Henry Glass & Co., Inc.



facebook

Finished Pillow Sizes: Pillow #1 - 17" x 17"

Pillow #2 - 18" x 18"

Pillow #3 - 14" x 29"

49 West 37th Street, New York, NY 10018

tel: 212-686-5194 fax: 212-532-3525

Toll Free: 800-294-9495

www.henryglassfabrics.net

Please check our website for pattern updates before starting this project.

MOONSHINE

Pillows

Finished Pillow Sizes: Pillow #1 - 17" x 17"

Pillow #2 - 18" x 18"

Pillow #3 - 14" x 29"

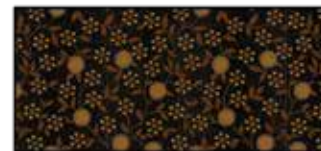
Fabrics in the Collection



Crow Blocks - Black
2527P-99



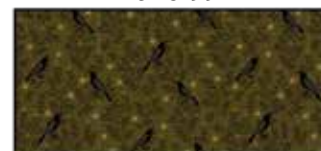
Moonshine Vine - Pumpkin
2528-35



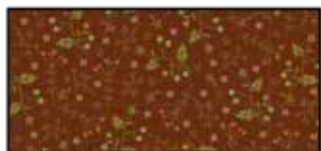
Moonshine Vine - Black
2528-99



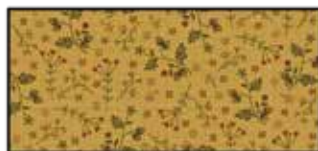
Crows and Wildflowers - Gold
2529-44



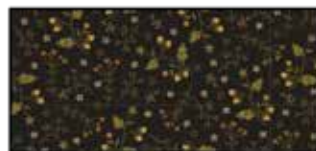
Crows and Wildflowers - Green
2529-66



Acorns and Flowers - Pumpkin
2530-35



Acorns and Flowers - Butternut
2530-44



Acorns and Flowers - Charcoal
2530-98



Star Flowers - Gold
2531-33



Star Flowers - Red
2531-88



Star Flowers - Charcoal
2531-98



Bias Weave Texture - Pumpkin
2532-35



Bias Weave Texture - Gold
2532-44



Bias Weave Texture - Green
2532-66



Bias Weave Texture - Black
2532-99



Moonshine Border Stripe - Black
2534-99



Moonshine Panel - Black
2533P-99

Select Fabrics from
Whimsy Basics



Crimson
8945-88



Dove Gray
8945-90



Black
8945-99

MOONSHINE

Pillows

Page 1

Materials

| | | |
|-----------------------|-------------------------------------|----------|
| 1 panel | Crow Blocks - Black (A) | 2527P-99 |
| $\frac{3}{8}$ yard | Bias Weave Texture - Black (B) | 2532-99 |
| $\frac{1}{4}$ yard | Moonshine Vine - Black (C) | 2528-99 |
| $\frac{5}{8}$ yard | Moonshine Vine - Pumpkin (D) | 2528-35 |
| 1 yard | Crows and Wildflowers - Gold (E) | 2529-44 |
| $\frac{1}{8}$ yard | Acorns and Flowers - Pumpkin (F) | 2530-35 |
| 1 $\frac{1}{8}$ yards | Moonshine Border Stripe - Black (G) | 2534-99 |
| $\frac{1}{2}$ yard | Star Flowers - Charcoal (H) | 2531-98 |

You will also need:

- (1) 17" square pillow form
- (1) 18" square pillow form
- Fiberfill

Cutting Instructions

Please note: all strips are cut across the width of fabric (WOF) from selvage to selvage unless otherwise noted.

From the Crow Blocks - Black (A), fussy cut:

- (1) 11" x 15" rectangle, centered on the crow on the fence.
- (4) 7 $\frac{1}{4}$ " x 7 $\frac{1}{4}$ " squares, each centered on a small crow.

From the Bias Weave Texture - Black (B), cut:

- (1) 1 $\frac{3}{4}$ " x WOF strip. Sub-cut (2) 1 $\frac{3}{4}$ " x 17 $\frac{1}{2}$ " strips.
- (1) 1 $\frac{1}{2}$ " x WOF strip. Sub-cut (8) 1 $\frac{1}{2}$ " squares.
- (1) 1 $\frac{1}{4}$ " x WOF strip. Sub-cut (2) 1 $\frac{1}{4}$ " x 15" strips.
- (1) 1" x WOF strip. Sub-cut (2) 1" x 15" strips.
- (1) 1" x WOF strip. Sub-cut (10) 1" x 2 $\frac{1}{2}$ " strips.
- (2) 1" x WOF strips. Sub-cut (2) 1" x 23 $\frac{1}{2}$ " strip and (2) 1" x 6 $\frac{1}{2}$ " strips

From the Moonshine Vine - Black (C), cut:

- (1) 1 $\frac{1}{2}$ " x WOF strip. Sub-cut (12) 1 $\frac{1}{2}$ " squares.
- (2) 1 $\frac{1}{2}$ " x WOF strips. Sub-cut (4) 1 $\frac{1}{2}$ " x 14 $\frac{1}{2}$ " strips.
- (1) 1" x WOF strip. Sub-cut (1) 1" x 14 $\frac{1}{2}$ " strip and (2) 1" x 7 $\frac{1}{4}$ " strips.

From the Moonshine Vine - Pumpkin (D), cut:

- (1) 12 $\frac{1}{2}$ " x WOF strip. Sub-cut (2) 12 $\frac{1}{2}$ " x 17 $\frac{1}{2}$ " strips.
- (1) 1" x WOF strip. Sub-cut (24) 1" x 1 $\frac{1}{2}$ " strips.
- (2) 1" x WOF strips. Sub-cut (24) 1" x 2 $\frac{1}{2}$ " strips.

From the Crows and Wildflowers - Gold (E), cut:

- (1) 7 $\frac{1}{2}$ " x Length of Fabric (LOF) strip. Sub-cut (2) 7 $\frac{1}{2}$ " x 1 $\frac{1}{2}$ " strips.
- From the remaining fabric, cut (2) 2" x 25 $\frac{1}{2}$ " WOF strips, and (4) 1 $\frac{1}{2}$ " x 14 $\frac{1}{2}$ " WOF strips.
- (1) 13 $\frac{1}{2}$ " x WOF strip. Sub-cut (2) 13 $\frac{1}{2}$ " x 18 $\frac{1}{2}$ " WOF strips.

From the Acorns and Flowers - Pumpkin (F), cut:

- (1) 1 $\frac{1}{2}$ " x WOF strip. Sub-cut (8) 1 $\frac{1}{2}$ " squares.

From the Moonshine Border Stripe - Black (G), fussy cut:

- (2) 33" x 2 $\frac{1}{2}$ " LOF strips, each centered on a row of leaves.
- (1) 22 $\frac{1}{2}$ " x 6 $\frac{1}{2}$ " LOF strip, centered on a row of crows.
- (2) 18" x 2 $\frac{1}{2}$ " LOF strips, each centered on a row of leaves.

From the Star Flowers - Charcoal (H), cut:

- (1) 14 $\frac{1}{2}$ " x 29 $\frac{1}{2}$ " WOF strip.

Pillow #1 Assembly

1. Sew (1) 1" x 15" Fabric B strip to each side of the 11" x 15" Fabric A rectangle to make (1) Unit 1 rectangle (Fig. 1).

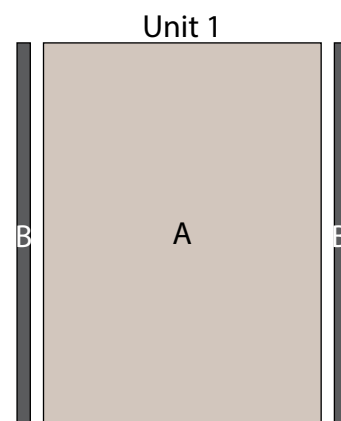


Fig. 1

2. Sew (1) 1" x 1 $\frac{1}{2}$ " Fabric D strip to each side of (1) 1 $\frac{1}{2}$ " Fabric C square. Sew (1) 1" x 2 $\frac{1}{2}$ " Fabric D strip to the top and to the bottom of the Fabric C square to make (1) Unit 2 square (Fig. 2). Repeat to make (12) Unit 2 squares total.

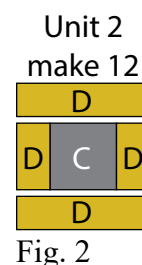


Fig. 2

3. Sew (6) Unit 2 squares and (5) 1" x 2 $\frac{1}{2}$ " Fabric B strips together, alternating them, to make (1) Unit 3 strip (Fig. 3). Repeat to make a second Unit 3 strip.

4. Sew (1) Unit 3 strip to each side of the Unit 1 rectangle. Sew (1) 1 $\frac{3}{4}$ " x 15" Fabric B strip to each side of the Unit 1 rectangle. Sew (1) 1 $\frac{3}{4}$ " x 17 $\frac{1}{2}$ " Fabric B strip to the top and to the bottom of the Unit 1 rectangle to make the Pillow #1 top.

Unit 3 make 2

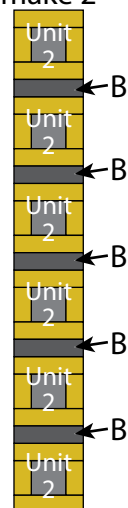


Fig. 3

Pillow #1 Layout

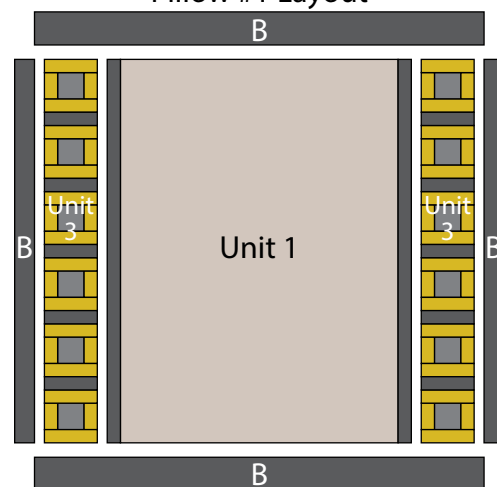


Fig. 4

MOONSHINE

Pillows

Page 2

5. Turn under the 17 1/2" edge of (1) 12 1/2" x 17 1/2" Fabric D strip approximately 1/4", press and repeat to make a finished edge on (1) edge of the Fabric D strip. Repeat with the second 12 1/2" x 17 1/2" Fabric D strip.

6. Position and pin each back envelope flap, right sides together with the pillow front, overlapping the finished edges in the middle and aligning the raw edges with the pillow front (Fig. 5). Stitch around the pillow front and back to complete the pillow.

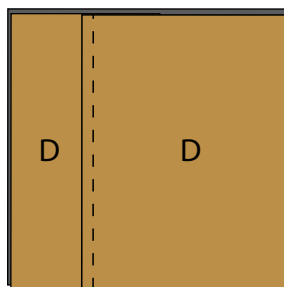


Fig. 5

7. Turn the pillow right side out and add the pillow form.

Pillow #2 Assembly

8. Sew (1) 7 1/4" Fabric A square to each side of (1) 1" x 7 1/4" Fabric C strip. Repeat to make a second strip. Sew the strips to the top and to the bottom of (1) 1" x 14 1/2" Fabric C strip to make (1) Unit 4 square (Fig. 6).

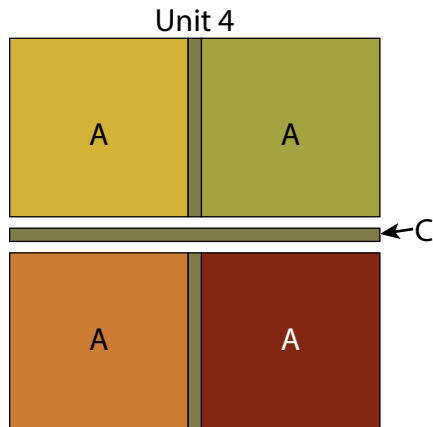


Fig. 6

9. Sew (1) 1 1/2" Fabric B square to the left side of (1) 1 1/2" Fabric F square to make the top row. Sew (1) 1 1/2" Fabric F square to the left side of (1) 1 1/2" Fabric B square to make the bottom row. Sew the (2) rows together to make (1) Unit 5 square (Fig. 7). Repeat to make (4) Unit 5 squares total.

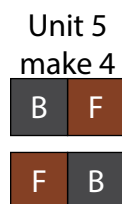


Fig. 7

10. Sew (1) 1 1/2" x 14 1/2" Fabric E and (1) 1 1/2" x 14 1/2" Fabric C strip together lengthwise and in that order to make the Left Side Border (Fig. 8).

Left Side Border



Fig. 8

Right Side Border



Fig. 9

11. Sew (1) 1 1/2" x 14 1/2" Fabric C and (1) 1 1/2" x 14 1/2" Fabric E strip together lengthwise and in that order to make the Right Side Border (Fig. 9).

12. Sew (1) 1 1/2" x 14 1/2" Fabric E strip to the top of (1) 1 1/2" x 14 1/2" Fabric C strip lengthwise to make the Top Border (Fig. 10).

Top Border



Fig. 10

13. Sew (1) 1 1/2" x 14 1/2" Fabric E strip to the bottom of (1) 1 1/2" x 14 1/2" Fabric C strip lengthwise to make the Bottom Border (Fig. 11).

Bottom Border



Fig. 11

14. Sew the Left Side Border and Right Side Borders to the left and to the right side of the Unit 4 square (Fig. 12).

15. Sew (1) Unit 5 square to each end of the Top Border. Sew the newly sewn strip to the top of the Unit 4 square (Fig. 12).

Pillow #2 Layout

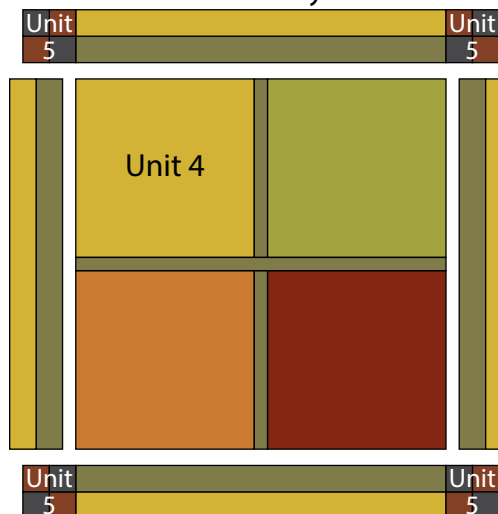


Fig. 12

17. Turn under the 18 ½" edge of (1) 13 ½" x 18 ½" Fabric E strip approximately ¼", press and repeat to make a finished edge on (1) edge of the Fabric E strip. Repeat with the second 13 ½" x 18 ½" Fabric E strip.

18. Position and pin each back envelope flap, right sides together with the pillow front, overlapping the finished edges in the middle and aligning the raw edges with the pillow front (Fig. 13). Stitch around the pillow front and back to complete the pillow.

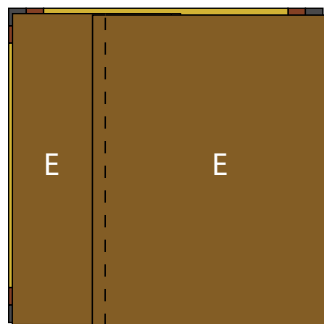


Fig. 13

19. Turn the pillow right side out and add the pillow form

Pillow #3 Assembly

20. Sew (1) 1" x 6 ½" Fabric B strip to each side of the 22 ½" x 6 ½" Fabric G strip. Sew (1) 1" x 23 ½" Fabric B strip to the top and to the bottom of the Fabric G strip to make (1) Unit 6 strip (Fig. 14).

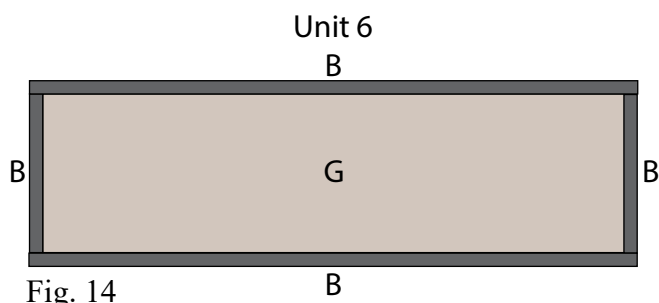


Fig. 14

21. Sew (1) 1 ½" x 7 ½" Fabric E strip to each side of the Unit 6 strip. Sew (1) 2" x 25 ½" Fabric E strip to the top and to the bottom of the Unit 6 strip to make (1) Unit 7 strip (Fig. 15).

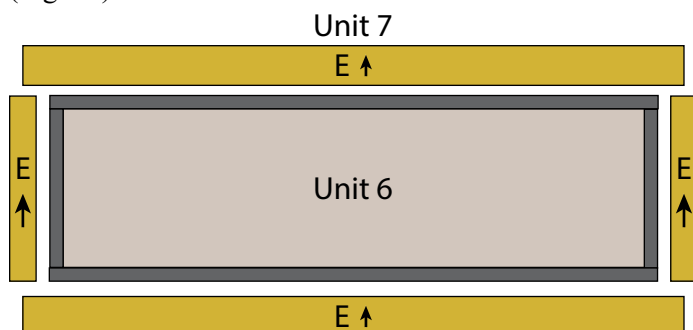


Fig. 15

22. Center (1) 2 ½" x 18" Fabric G strip on (1) side of the Unit 7 strip and pin in place. Start sewing the strip a ¼" from the top edge of the block and stop a ¼" from the bottom edge. **DO NOT TRIM THE EXCESS.** Repeat with the opposite side.

23. Repeat Step 22 to sew (1) 2 ½" x 33" Fabric G strip to the top and to the bottom of the Unit 7 strip, making sure to stop and start ¼" away from each end of the block. To miter each corner, fold the block on a diagonal, wrong side together. This should line up the strips from adjacent sides (Fig. 16).

24. Starting at the sewn seam (represented by the arrow in Figure 16), draw a 45-degree line to the edge of the fabric. Sew on the drawn line. Trim the excess fabric leaving a ¼" seam. Repeat this step with the remaining corners to make the Pillow #3 top (Fig. 17).

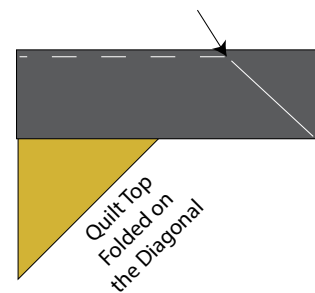


Fig. 16

Pillow #3 Layout

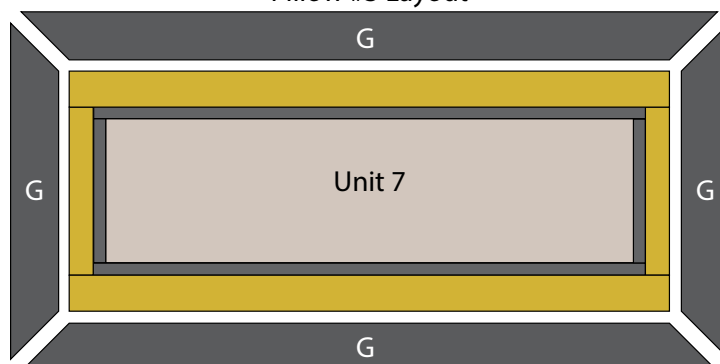


Fig. 17

25. Place the Pillow #3 top and the 14 ½" x 29 ½" Fabric H strip right sides together and sew, leaving a space for turning.

26. Turn the pillow top right side out, fill with fiberfill and sew the seam closed to complete the pillow.

Every effort has been made to ensure that all projects are error free. All the information is presented in good faith, however no warranty can be given nor results guaranteed as we have no control over the execution of instructions. Therefore, we assume no responsibility for the use of this information or damages that may occur as a result. When errors are brought to our attention, we make every effort to correct and post a revision as soon as possible. Please make sure to check www.henryglassfabrics.net for pattern updates prior to starting the project. We also recommend that you test the project prior to cutting for kits. Finally, all free projects are intended to remain free to you and are not for resale.